

Luxurious Accommodation Generous Hospitality Engaging Hosts



www.heritageinns.co.nz

2009-2010

A Warm and Generous Welcome

Heritage & Character Inns is New Zealand's finest boutique collection of independently rated 4 and 5 Star lodges, bed & breakfasts, historic villas and country cottages.

Our personally hosted properties throughout New Zealand have a reputation for delivering luxurious accommodation, fabulous breakfasts, generous hospitality and warm interaction with guests.

Our exceptional hosts will pamper you, help plan your activities and deliver or guide you to world-class wine and food experiences.

Your stay will be an experience to treasure.

Convivial Hosts



Stunning Scenery



Indulgent Breakfasts



New Acquaintances



Romantic Privacy



Reservations & Policies

Reservations can be made directly with each property at www.heritageinns.co.nz by email, fax or phone.

You can make multiple reservations online with member properties.

Go to www.heritageinns.co.nz/reservations.html where you can choose your region, check rooms for availability and book & receive confirmation of your reservations with total confidence.

Travel agent bookings are welcome through HCI Central Reservations for agents at www.heritageinns.co.nz/agents_login.html

All properties have a 'No Smoking' policy indoors and some are not suitable for children.

All properties have a common cancellation policy, which we recommend that you check when making your reservations.

Tariff Range

All tariffs are on a two person share per night basis, inclusive of breakfast & all local taxes.

As tariffs are subject to change, please check details with your hosts when making reservations. Individual properties may require deposits.

Disclaimer

Heritage Inns of New Zealand Inc. has taken great care in the selection of member properties in keeping with the national quality assurance standards of Qualmark NZ, but makes nor implies no warranty to this effect.

The group does not accept any liability for any act, neglect or default on the part of individual property owners. All contracts made are with the individual inn and are guided by New Zealand law.

Comments or enquiries can be directed via email to:
info@heritageinns.co.nz





New Zealand Tourism's Official Quality Mark

A holiday just isn't a holiday without good places to stay and great things to do. To be assured of this, look for the Qualmark®. As New Zealand Tourism's official quality mark, the Qualmark® provides independent quality assurance of accommodation and other tourism businesses.

All Qualmark® accommodation can be relied upon to meet your basic requirements of cleanliness, safety, security and comfort. Only accommodation that has undergone over 400 quality checks can display a Qualmark® star grade. Moreover, using the Qualmark® star grading system, you can select accommodation that best suits your needs.

The star grade system

With each accommodation type, the star grades provide independent confirmation of the range and quality of services and facilities on offer. So you can book and buy with confidence.

- ★ **ACCEPTABLE** : Meets customer's minimum requirements.
★ plus Basic, clean and comfortable accommodation.
- ★★ **GOOD** : Exceeds customer's minimum requirements
★★ plus with some additional facilities and services.
- ★★★ **VERY GOOD** : Provides a range of facilities and services and
★★★ plus achieves good to very good quality standards.
- ★★★★ **EXCELLENT** : Consistently achieves high quality levels
★★★★ plus with a wide range of facilities and services.
- ★★★★★ **EXCEPTIONAL** : Among the best available in New Zealand.

- AF **APPLIED** : Indicates a property has not been assessed and/or
the grade has not been finalised at the time of printing.

Guest & Hosted

Includes bed & breakfasts, farm and home stays, guest houses, boutique lodges, country inns, character homes and similar establishments providing 'home-like' or 'character' accommodation.

There's normally emphasis on the personal interaction between the guest and the host. Kitchen/cooking facilities are not usually provided, although some properties may offer self-contained cottages. Depending on the style of the property, bedrooms may include tea and coffee making facilities, TV and a phone. Lounge facilities are usually shared with the hosts and/or other guests. Bathrooms may be ensuite, private or shared. Breakfasts are a feature and are usually part of an all-inclusive tariff. In more remote areas, other meals may be provided on request.



We're Going Green!

Heritage & Character Inns are located in some of the most beautiful places in New Zealand and our members are committed to *Responsible Tourism* and keeping our environment as pristine as possible. That's why we are going green with Qualmark.

As New Zealand's official mark of quality for tourism, all businesses that have a Qualmark licence are assessed on their environmental performance. This is part of the New Zealand Tourism's commitment to looking after New Zealand for the enjoyment of future generations.

Minimum requirements include establishing basic environmental practices and completing an environmental review of the business. Those businesses that are performing at the top levels will be engaging in activities that include:

- **Energy efficiency**
- **Conservation initiatives**
- **Waste management**
- **Community activities**
- **Water conservation**

For you, recognising top performing Qualmark Green businesses is easy - they list Enviro logos. Look for the following logos on websites, online listings and in other promotional material such as brochures. Where applicable these logos are shown next to the Qualmark star grading or Endorsed logos.



Over the next 12 months all Heritage & Character Inns members will be assessed for their commitment to environmental & social issues. So keep a look out for a growing list of our members with Enviro mark Green endorsement.

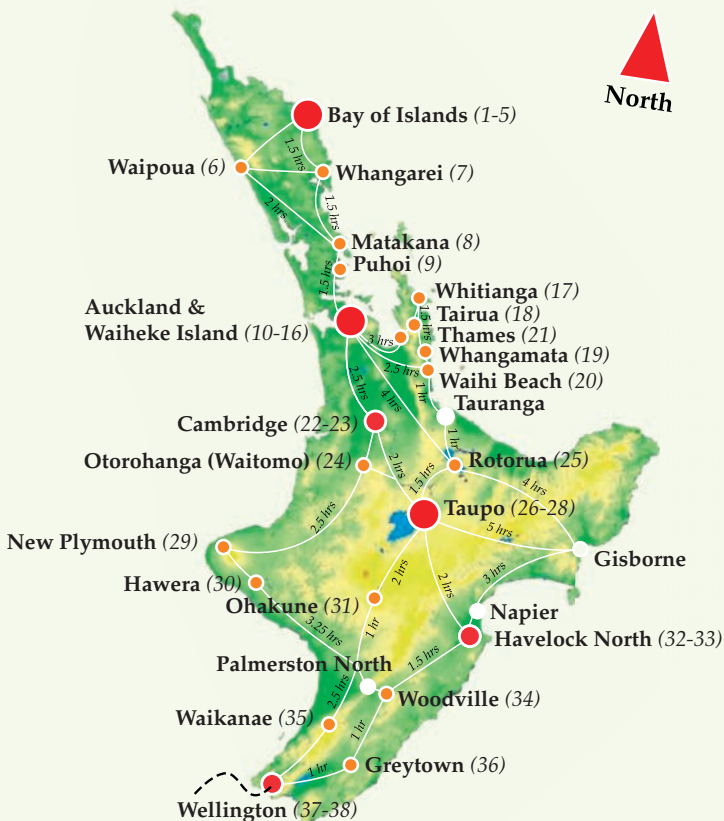
CHOOSE YOUR ROUTE

Select Heritage & Character Inns along your route.
The New Zealand map shows where you can find our inns.

The white lines connecting the towns show an estimated travelling time by car, allowing for regular stops.

For South Island map see page 15

NORTH ISLAND



- One inn in this town / area
- Two inns in this town / area
- Three or more inns in this town / area
- (69) Inn number in this brochure
- 1.5 hr Estimated travel time between towns



1 The Summer House – Bay of Islands

Qualmark® 4 Star⁺



Tariff: \$265 - \$340 **Hosts:** Rod & Christine Brown
2 rooms with ensuites, 1 self contained suite

The setting is idyllic, accommodation exquisite and the company convivial at The Summer House. Our architecturally designed home is set in a tranquil hectare of citrus orchard and beautifully landscaped sub-tropical garden. Enjoy gourmet breakfasts, warm hospitality and inspiring surrounds. We are keenly interested in the natural environment, our house is built on conservation principles and we have a Qualmark Enviro-Gold assessment for sustainability. French and German spoken.

424 Kerikeri Road, Kerikeri, Bay of Islands.

Tel: +64-9-407 4294 Email: summerhouse@xtra.co.nz www.thesummerhouse.co.nz

2 Heron Hill – Bay of Islands

Qualmark® 4 Star⁺



Tariff: \$270 - \$320

Hosts: Miranda & Keith Pasley

1 superking/twin, 1 queen both with ensuites

Boutique accommodation in sub-tropical Kerikeri. Situated in lush gardens overlooking the tranquil Kerikeri Inlet, Heron Hill offers a relaxed and luxurious environment in which to unwind. With two guest rooms in separate wing, privacy and comfort are assured during your stay. Dinner is available, prepared by your chef host using fresh local produce and matched with stunning New Zealand wines.

6 Heron Hill, Kerikeri, Bay of Islands.

Tel: +64-9-401 7047 Email: info@heronhill.co.nz www.heronhill.co.nz

3 Titore Lodge – Bay of Islands

Qualmark® 5 Star



Tariff: \$370 - \$495 **Host:** Dr Carolyn Mills

1 superking/twin, 1 queen, both with ensuites

Overlooking historic Russell Harbour, Bay of Islands, Titore Lodge borders reserve land. Luxury ensuites with private lounges decorated in fine furnishings and original art, private entrances and patios. Pathways take guests to sandy beaches, lookout sites or Russell village. Guests enjoy watersports, historic tours, walking, extensive library, kiwis. Spa services. Internet. Special packages. Custom designed retreats-enquire. 1 King/twin 1 queen.

32 Titore Way, Russell, Bay of Islands.

Tel: +64-9-403 7335 Email: info@attitorelodge.com www.attitorelodge.com

4 Bay of Islands Lodge – Bay of Islands

Qualmark® 5 Star



Tariff: \$450 - \$580 **Hosts:** Peter & Glennis Meier

4 king/twin suites with ensuites

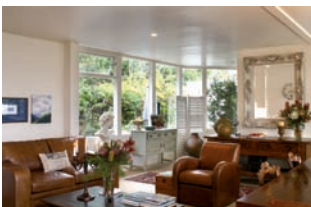
This beautiful lodge brings elegance, luxury & style to the Bay of Islands. Set in the tranquility of a native bush reserve, a few minutes drive from Paihia, the lodge overlooks Veronica Channel and native bush with mesmerizing panoramic views of the inner bay across to Russell and beyond. Personalized friendly service - dinner highly recommended, offering innovative contemporary NZ cuisine - free wireless internet - infinity pool - complimentary drinks.

State Highway 11, Port Opua, Bay of Islands.

Tel: +64-9-402 6075 Email: stay@bayofislandslodge.co.nz www.bayofislandslodge.co.nz

5 Bed Of Roses – Kerikeri, Bay of Islands

Qualmark® 5 Star



Tariff: \$275 - \$470 **Hosts:** Louisa & Cliff Hobson-Cory

One king two queen one can be expanded see website

Be charmed at the Bed of Roses. Perfect location midway between the village and the historic basin with the famous Stone Store and Landing. Excellent restaurants. All within walking distance. Detailed French country style accommodation. Breakfast is a delicious Martha Stewart affair served in front of panoramic views of the countryside. World class Kauri Cliffs golf course in area. Enjoy Kerikeri the jewel of the Bay of Islands.

165 Kerikeri Road, Kerikeri, Bay of Islands.

Tel: +64-9-407 4666 Email: bedofroses@xtra.co.nz www.bedofroses.co.nz

6 Waipoua Lodge – Waipoua Forest, Northland

Qualmark® 5 Star



Tariff: \$490 - \$590

Hosts: Nicole & Chris Donahoe

3 ensuite apartments, 1 x 2 brm suite

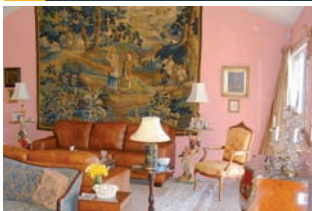
Luxury etched in History. Relaxed, gracious, historic Lodge, set in a landscape, where lawns sweep down to a forest walk and birdlife fills the trees - private, luxurious apartments overlooking Waipoua forest. The gateway to the natural world. NZ's largest Kauri Forest Sanctuary, Lakes and Golden Sand Beaches. Breathtaking, pristine and untouched by humankind.

State Highway 12, Waipoua Forest, Northland.

Tel: +64-9-439 0422 Email: heritage@waipoulodge.co.nz www.waipoulodge.co.nz

7 Lake House – Whangarei

Qualmark® 4 Star+



Tariff: \$235 - \$255 **Hosts:** Chris & Susan Alves

1 superking/twin; 1 superking both with ensuites

Nestled in a peaceful valley overlooking a lake and guarded by Mt Maungatapere, Lake House offers peace, elegance and hospitality. The two guest rooms are in a separate wing and one room is specially designed to be suitable for the disabled. Both the guest and living rooms are furnished with fine antiques and art works and adjoin extensive decks and a swimming pool. Enjoy fine food, local wines and good conversation.

212 Pukeatua Road, R.D.9, Whangarei 0179.

Tel: +64-9-434 8084 Email: unwind@lakehouse.net.nz www.lakehouse.net.nz

8 The Saltings Estate – Matakana

Qualmark® 4 Star+



Tariff: \$345 - \$495

Hosts: Terry & Maureen Baines

4 superking, 1 king. All with ensuites

Romantic vineyard setting with stunning water views. This place is good for the soul! Come and linger with us for awhile where everything we do is in harmony with nature. Two beautiful fully equipped apartments at the end of our vineyard or bed and breakfast in the main house. Only 45 minutes north of Auckland. A minimum two night stay is required.

1210 Sandspit Road, Warkworth, Matakana.

Tel: +64-9-425 9670 Email: relax@saltings.co.nz www.saltings.co.nz

9 The Ridge Country Lodge – Puhoi Historic Village - North Auckland

Qualmark® 4 Star+



Tariff: \$345 - \$375 **Hosts:** Maralyn & Ian Bateman

3 superking/twin rooms all with ensuites

Enjoy our relaxed, informal and homely atmosphere, great food and wine at our famous hosted dinner parties plus that extra touch of personal magic that makes The Ridge experience very special. Whether you have a weekend or a week, we have so much to offer. High on a ridge above the Historic Village of Puhoi, we are part of the Matakana Coast Wine Country. Just 30 minutes north of central Auckland, we're close to the city - but a world away!

147 Greenhollows Road, Puhoi Historic Village, North Auckland.

Tel: +64-9-426 3699 Freephone: 0580 843 743 Email: relax@theridge.co.nz www.theridge.co.nz

10 Peace and Plenty Inn – Auckland

Qualmark® 5 Star



Tariff: \$175 - \$350 **Host:** Judy Machin

7 rooms all with ensuites

Enjoy the hospitality and tranquillity of the Peace and Plenty Inn, a lovingly restored waterfront Victorian Villa in the charming harbour-side village of Devonport. Minutes from Auckland CBD by ferry, our spacious guest suites ooze colonial charm yet boast all modern conveniences. We serve a gourmet breakfast, organic and gluten free available on request. Wi-Fi Internet. Sustainability Qualmark Enviro-Gold. Lonely Planet's "Our" choice for Auckland.

6 Flagstaff Terrace, Devonport, Auckland.

Tel: +64-9-445 2925 Email: peaceandplenty@extra.co.nz www.peaceandplenty.co.nz

11 Great Ponsonby Arthotel – Auckland

Qualmark® 4 Star⁺



Tariff: \$180 - \$400

Hosts: Sally James & Gerard Hill
5 rooms and 6 studios all with ensuites

Perfect location in the city: close to razzmatazz of Ponsonby's restaurants and boutiques, a quiet location with large garden. Walk to harbour and city. Bus every 10 minutes to all city attractions. An 1889 villa carefully restored to reflect Auckland's Pacific heritage with bold colours and NZ and Pacific artworks. Studios designed in the style of our colonial heritage. Wifi, parking, and a delicious breakfast.

30 Ponsonby Terrace, Ponsonby, Auckland.

Tel: +64-9-376 5989 Freephone: 0800 766 792 Email: info@greatpons.co.nz www.greatpons.co.nz

12 Braemar on Parliament – Auckland

Qualmark® 4 Star



Tariff: \$225 - \$350

Hosts: John & Susan Sweetman
2 queen ensuites, 2 rooms share bathroom

Elegant Braemar on Parliament is unique, the only Edwardian Town House in the Auckland CBD still a family home. Downtown Auckland location means cinemas, theatres, cafes, restaurants and beautiful parks are just a short stroll away. Full breakfast. Dining room features fine linen, silver cutlery and bone china. Qualmark Enviro-Gold application pending.

7 Parliament Street, CBD Auckland.

Tel: +64-9-377 5463 Email: braemar@aucklandbedandbreakfast.com www.aucklandbedandbreakfast.com

13 Amerissit – Auckland

Qualmark® 4 Star



Tariff: \$185 - \$295 **Host:** Barbara McKain

2 king & 1 queen, all ensuited. Whole House rentable

Central location in quiet cul-de-sac in affluent suburb. Amerissit offers slimline TVs with over 50 channels available in rooms, DVDs, CDs and tuner at the touch of a button, direct dial phone and high speed Wireless Internet access. Golf Coaching with Stephen Partridge, discounts offered. Recommended by Fodors.

Voted one of the Best B&Bs in NZ 2009/2010 Edition of Frommers. Quote; Genuine Kiwi Hospitality / hard pressed to find better value.

20 Buttle St, Remuera / Newmarket, Auckland.

Tel: +64-9-522 9297 Email: barbara@amerissit.co.nz www.amerissit.co.nz

14 Seafields – Whitford, Auckland

Qualmark® 5 Star



Tariff: \$495 - \$650

Host: Stephanie Boyd-Dunlop
1 superking, 2 king, 1 kingtwin single, all ensuite

Peace, tranquillity and seclusion best describes the ambience at Seafields, our luxury waterfront retreat nestled on the shores of the Hauraki Gulf. Unwind in pampered comfort whilst enjoying magnificent uninterrupted sea views. Visit internationally renowned Aylries Garden or indulge in a game of golf. Seafields is 20 minutes from Auckland Airport and 30 minutes from downtown Auckland by car or by ferry.

283 Broomfields Road, Whitford, Auckland.

Tel: +64-9-530 8282 Email: stephanie@seafields.co.nz www.seafields.co.nz

15 Prospect Hill – Auckland

Qualmark® AF



Tariff: \$335 - 375 **Hosts:** Gaye & John Baldwin
Multi-room Queen suite. Pvt bath, dressing, lounge

In the heart of Auckland's leafy seaside suburb of Howick, with easy access to Auckland Int Airport, we are a luxurious, heritage listed garden retreat a few minutes walk from restaurants, cafes, shopping and beaches. We offer a blend of privacy - your own beautiful multi-room suite occupies an individual wing of the homestead - with friendly, personalised hospitality and indulgent luxury in a superb Auckland location.

40 Ridge Road, Howick, Manukau 2014, Auckland

Tel: +64-9 534 3542 Email: info@prospecthill.co.nz www.prospecthill.co.nz

16 Breakfast on the Beach Lodge – *Waiheke Island* Qualmark® 5 Star



Tariff: \$545 **Hosts:** Keith & Marilyn Graham
3 king and 1 with two queen beds; all ensuite.

Luxury waterfront accommodation on Blackpool Beach at Huruhi Bay, on beautiful Waiheke Island - Auckland's paradise in the Hauraki Gulf. The Lodge can be booked exclusively for special occasions, corporate or private functions; be it a management workshop, golfing group, book club, wedding party, family celebration or black tie dinner - whatever the occasion the Lodge is an ideal venue. Packages can be arranged to suit your requirements.

34 The Esplanade, Waiheke Island, Auckland 1081

Tel: +64-9-372-2682 Email: stay@breakfastonthebeach.co.nz www.breakfastonthebeach.co.nz

17 Villa Toscana – *Whitianga* Qualmark® 5 Star



Tariff: \$580 - \$850

Hosts: Giorgio & Margherita Allemano
1 self contained 2 bedroom suite with ensuite

Villa Toscana is an authentic Tuscan Villa nestled amongst native bush overlooking Mercury Bay and the islands. Fully self contained, the exclusive suite hosts up to four people in a lavishly decorated secluded environment. Single party only: a romantic escape for honeymoons, anniversaries or any special occasion.

PO Box 43, Ohuka Park, Whitianga.

Tel: +64-7-866 2293 Email: giorgio@villatoscana.co.nz www.villatoscana.co.nz

18 Colonial Homestay – *Tairua, Coromandel Peninsula* Qualmark® 4 Star+



Tariff: \$230 - \$245 **Hosts:** Jenny & Bob Geddes
2 queen size beds, 1 ensuite, 1 private

Our colonial-style home is situated near the top of Mount Paku. The quiet location ensures a good night's sleep in comfortable ensembles with quality linen and a relaxing decor. The surrounding decks overlook the view of the ocean & islands as does the dining room where we serve a generous continental and cooked breakfast including fresh home-made bread & muffins. Guests appreciate guidance with day trips & local activities.

202 Paku Drive, Tairua, Coromandel Peninsula.

Tel: +64-7-864 7743 Email: colonialhomestay@paradise.net.nz www.colonialhomestay.co.nz

19 Bushland Park Lodge – *Whangamata* Qualmark® 5 Star



Tariff: \$400 - \$450

Hosts: Reinhard & Petra Nickel
1 superking suite & 1 king suite both ensuite

Fine & classy dining and elegant accommodation in a New Zealand native 5 acres bush-park setting. Ideal for couples who expect high class cuisine and personal touch from glass fusing artists & host/owners of this retreat. Let the ambiance of the interior and beauty of the surroundings capture you. Walk tracks in bush & at beach very close together. Secluded escape for romantic occasions.

444 Wentworth Valley Rd, Whangamata.

Tel: +64-7-865 7468 Email: bushparklodge@xtra.co.nz www.bushlandparklodge.co.nz or www.4you2.co.nz

20 Waihi Beach Lodge – *Waihi Beach* Qualmark® 4 Star+



Tariff: \$245 - \$295 **Hosts:** Greg Whyte & Ali Lawn
3 king rooms & one queen studio apartment

Stunning sea & rural views and 9 k's of beach greet guests. 1 1/2 hours from Auckland International Airport the lodge is an ideal base for day trips to Rotorua & Coromandel. Local activities - golf, fishing, kayaking, surfing, working gold mine and walks in the Karangahake gorge. For dinner there are 5 local cafes. Gourmet breakfasts included in tariff. Wireless internet connection. 3 king rooms & 1 queen studio apartment. On site massage available.

170 Seaforth Rd, Waihi Beach 3611.

Tel: +64-7-863 5818 Email: info@waihibeachlodge.co.nz www.waihibeachlodge.co.nz

21 Cotswold Cottage – Thames, Coromandel

Qualmark® 4 Star+



Maramarahi Road, Totara, Thames, Coromandel.

Tel: +64-7-868 6306 Email: cotswoldcot@gmail.com www.cotswoldcottage.co.nz

Tariff: \$155 - \$295 **Hosts:** Graham & Jacqui Hamlet
2 queen 1 superking/twin all ensuite bathrooms

Relax and unwind at Cotswold Cottage Luxury Bed and Breakfast - a beautifully restored 1920s villa, 1 hour from Auckland and 3 minutes from Thames. Sunny romantic bedrooms each have stunning views and a private entrance leading on to the guest terrace and sun lounge. Internet, guest laundry, a hot spa pool and off street car parking are available. Holiday, honeymoon and speciality packages, sightseeing, adventure days out can be arranged.

22 Thornton House – Cambridge

Qualmark® 4 Star+



2 Thornton Rd., Cambridge.

Tel: +64-7-827 7567 Email: info@thorntonhouse.co.nz www.thorntonhouse.co.nz

Tariff: \$225 - \$270

Hosts: Christine Manson & David Cowley
2 queen rooms with ensuites

Built in 1902 and tastefully decorated in English country style, Thornton House offers you unique accommodation in a house that reflects Cambridge's special charm and character. Luxuriate in well appointed rooms and relax in the tranquil rose garden. Enjoy scrumptious breakfasts, fine wines and generous hospitality. Stroll to the cafes and antique shops located nearby in the centre of town.

23 Church on Church Rd – Cambridge

Qualmark® 4 Star+



2 Church Road, Cnr Church & Victoria Rds., RD1 (S.H 1B), Cambridge 3493.

Tel: +64-7-827 5440 Email: info@churchonchurchrd.co.nz www.churchonchurchrd.co.nz

Tariff: \$200 - \$265

Hosts: Kim & Steve Grounds
2 queen rooms with ensuites

This lovingly restored and extended 'once-a-country-church' offers you a comfortable stay and the best of Kiwi hospitality. You have the choice of two spacious luxury character suites, both with their own private entrance. Relax in the comfort of your suite, set out and enjoy all the region has to offer, or join your hosts for a glass of wine a chat and soak in the views of the beautiful Waikato countryside.

24 Kamahi Cottage – Otorohanga / Waitomo

Qualmark® 5 Star



229 Barber Rd, Rewarewa R.D.5, Otorohanga 3975.

Tel: +64-7-873 0849 Email: enquiries@kamahi.co.nz www.kamahi.co.nz

Tariff: \$235 - \$450 **Hosts:** Elisabeth & Evan Cowan
Self contained cottage, queen bed & queen sofa-sleeper for 2 extra guests, private bathroom

Romantic country cottage & honeymoon retreat near the Waitomo Caves. Peaceful, private farm location with panoramic views and beautiful gardens. An intimate, self-contained getaway for a stress-free break. Complimentary toiletries, fresh flowers, home baking, port, schnapps, teas and coffee. Gourmet breakfasts are included in the tariff and dinners are available by prior arrangement. Children are very welcome. Maximum 4 guests.

25 Hamurana Lodge – Rotorua

Qualmark® 5 Star



415 Hamurana Road, Rotorua.

Tel: +64-7-332 2222 Email: reservations@hamuranalodge.com www.hamuranalodge.com

Tariff: \$385 - \$855 **Hosts:** Graziella & Steave Novella
12 superking/twin, king or queen rooms all ensuite

At Hamurana Lodge we offer a unique country style boutique lodge where guests can enjoy the grandeur of the manor house, it's gardens and lifestyle farm, along with warm personal service and fine French Cuisine by your hosts. This magnificent country house is situated a pleasant 15 minute drive from the center of Rotorua and boasts 12 ensuite rooms, sweeping lake views and, superb facilities.

26 Tauhara Sunrise – Taupo

Qualmark® 5 Star



Tariff: \$300 - \$575 **Hosts:** Rob & Becky McEwen
1 cottage (king), 2 suites (1 king, 1 queen)

Explore Taupo's many sights and activities and enjoy day trips to Waitomo Caves, Rotorua, and Tongariro National Park. Two lovely suites, each with dramatic lake views, plus Chalet d'Amour, a luxurious, romantic cottage with fireplace, quality A/V system and decadent bathroom with huge double shower and double spa bath. Enjoy a soak in the hot tub, a drink at the bar, or a relaxation massage. Complimentary high-speed internet access.

38 Mapara Road, Taupo.

Tel: +64-7-376 8555 Email: rob@tauharasunrise.com www.tauharasunrise.com

27 Wharewaka Lodge – Four Mile Bay, Taupo

Qualmark® 4 Star+



Tariff: \$350 - \$375

Hosts: Susan & Tony Dalby

1 Super king, 1 queen, 1 king/twin, all ensuite

Visit Taupo for golf, trout fishing, Tongariro World Heritage Park, thermal parks and spas, wine tours and Maori culture. Experience our warm hospitality and boutique lake edge accommodation. Relax with complimentary pre dinner wine and hors d'oeuvres by open fire or the terrace. Enjoy our generous healthy breakfasts.

87 Wharewaka Road, Four Mile Bay, Taupo 3330.

Tel: +64-7-378 8169 Email: stay@wharewakalodge.com www.wharewakalodge.com

28 Point View Lodge – Taupo

Qualmark® 5 Star



Tariff: \$290 - \$550 **Hosts:** Tricia & Bruce Robertson
Two king (lake views), One queen - all with ensuite

Point View Lodge offers views over Lake Taupo and to the mountains of the Tongariro National Park, only six minutes from central Taupo. The lodge sits gracefully in expansive lawns and is appointed to suit the discerning traveler. The natural thermal spa is the perfect place to relax and revive. Dining at Point View is upon request, with first class cuisine using only the freshest and best of ingredients, all served with fine local wines. Proudly graded Qualmark Enviro-Silver.

20 Chesham Ave., Botanical Heights, Taupo.

Tel: +64-7-377 4611 Email: stay@pointview.co.nz www.pointview.co.nz

29 Nice Hotel – New Plymouth

Qualmark® 4 Star+



Tariff: \$230 - \$290

Host: Terry Parkes

7 individually styled rooms & 1 suite with lounge

This historic 1865 residence is now a beautifully styled boutique hotel. Seven individually detailed rooms offer guests every comfort. Table, our award winning restaurant which opens to a tropical deck, offers seasonal dishes matched with fine wines. Nice Hotel is just a stroll away from shops, galleries, parks and the unique coastal walkway.

71 Brougham St, New Plymouth.

Tel: +64-6-758 6423 Email: info@nicehotel.co.nz www.nicehotel.co.nz

Make your reservations online with HCl member properties.

Go to www.heritageinns.co.nz/reservations

Choose your Region. Check rooms availability...
Book & receive confirmation of your reservations
with total confidence.

30 Tairoa Lodge & Cottage – Hawera

Qualmark® 4 Star+



Tariff: \$175 - \$250 **Hosts:** Linda & Steve Morrison
2 queen rooms with ensuite. Self-catering Cottage

Capture the essence of yesteryear when you stay at Tairoa Lodge. Originally built in 1875 & recently renovated for the comfort of guests, the Lodge offers two upstairs spacious guest rooms, each with private ensuite, luxury extras & views over the established gardens & swimming pool. Sumptuous breakfasts & dinners by arrangement. Tairoa Cottage - self-contained, offers peace & tranquility, sleeps 5. Romance Packages.

3 Puawai Street, Hawera.

Tel: +64-6-278 8603 Email: tairoa.lodge@xtra.co.nz www.tairoa-lodge.co.nz

31 Ahuru Lodge – Ohakune

Qualmark® AF



Tariff: \$385 **Hosts:** Lynn Fiebig & Richard Chittock
4 self contained suites with king beds all ensuite

New architecturally designed AHURU Lodge hugs the banks of Tokiahuru Stream. Relax, unwind, fish, ski, soak up the ambiance - a perfect place to enjoy a stimulating holiday coupled with pure indulgence. Facilities: sauna room, mineral spa, private self contained suites, relaxation treatments and bespoke fishing, skiing, walking, adventure tours on the doorstep. At AHURU we take pride in our superb selection of local cuisine and wine.

105 Powells Road, ,Ohakune.

Tel: +64-6-385-8478 Email: info@ahurulodge.com www.ahurulodge.com

32 Endsleigh – Havelock North

Qualmark® 5 Star
Self Contained & Serviced



Tariff: \$200 - \$250

Hosts: Margie & Denis Hardy
3 Self contained cottages

Three stylish self-catering cottages on a magnificent rural property close to the village. All cottages have access to the extensive main gardens and tennis court. Barbecues, mountain bikes, croquet and pétanque sets provided. Breakfast provisions provided.

22 Endsleigh Rd, Havelock North.

Tel: +64-6-877 7588 Email: endsleigh.cottages@xtra.co.nz www.endsleighcottages.co.nz

33 Muritai – Havelock North

Qualmark® 5 Star
Self Contained & Serviced



Tariff: \$1,000

Hosts: Margie & Denis Hardy
5 double, 1 twin single room & a single room with 5 full bathrooms

A beautiful country style home and large garden which dates from the 1880's. This large villa has been renovated to accommodate single parties of up to 13 guests in great comfort and style. Although intended primarily for self-catering guests full hosting/catering services can be arranged.

68 Duart Rd., Havelock North.

Tel: +64-6-877 7588 Email: endsleigh.cottages@xtra.co.nz www.muritai.co.nz

34 Ottawa Lodge – Woodville

Qualmark® 4 Star+



Tariff: \$295 - \$325 **Hosts:** Del & Sue Trew
2 Queen/King rooms each with private bathroom

Nestled in hills near Woodville, this historic Edwardian homestead is one of the finest examples of Art Nouveau architecture and interior decor. Guests have exclusive use of the north wing with its sitting room and octagonal library. The house is centrally heated. The award winning cuisine features innovative fish dishes and organic ingredients, and friendly service. Ottawa has achieved the Qualmark Bronze Enviro Award for responsible tourism.

132 Otawahao Road, RD1, Woodville.

Tel: +64-6-376 4603 Email: rest@otawalodge.co.nz www.otawalodge.co.nz

35 Te Horo Lodge – Wellington (Te Horo, Kapiti Coast)

Qualmark® 4 Star+



Tariff: \$230 - \$390 **Host:** Craig Garner
3 double/twin; 1 double/twin plus a single

Exclusive purpose built Lodge offering you peace and tranquillity for rest and relaxation, 50 minutes from Wellington (off peak). The Lodge features a magnificent stone fire place and chimney and a large recycled timber dining table. The grounds include a spa, swimming pool, five acres of native bush (mainly Kohekohe trees) extensive gardens and a 370 tree olive grove. The native bush is now protected by a heritage order.

109 Arcus Road, Te Horo, Kapiti Coast.

Tel: +64-6-364 3393 Freephone: 0800 483 467 Email: enquiries@tehorolodge.co.nz www.tehorolodge.co.nz

36 Briarwood – Greytown

Qualmark® 5 Star
Self Contained & Serviced



Tariff: \$319 - \$485 **Host:** Liz Kennedy
3 self contained suites

Experience modern luxury with a difference... NZ Heritage Building architecturally renovated to provide new apartment style suites combining a perfect balance between urban chic & Victorian elegance. French Doors open from the bedrooms to a patio with fountain view where you may barbeque or breakfast with room service available. Accommodation options make Briarwood ideal for a romantic escape, family holiday or just pure indulgence.

21 Main St, Greytown, South Wairarapa.

Tel: +64-6-304 8336 Email: briarwood@xtra.co.nz www.briarwood.biz

37 Mount Victoria – Central Wellington

Qualmark® 4 Star+



Tariff: \$270 - \$315 **Hosts:** Bill & Coral Aitchison
2 queen rooms with ensuite, fridge and TV

Catering for the discerning traveller, we offer two double rooms with ensuite in a luxuriously renovated Edwardian villa located in the heart of Wellington city. We are a short walk from Wellington's best restaurants, cafes and major attractions such as Te Papa museum and the Oriental bay beaches. Gourmet breakfasts and pre-dinner drinks and canapes are included in the tariff. Enjoy complimentary garaging, broadband and our private courtyard.

11 Lipman St, Mount Victoria, Wellington

Tel: +64-4-802 4886 Email: stay@mountvictoria.co.nz www.mountvictoria.co.nz

38 Villa Margarita – Wellington

Qualmark® 5 Star



Tariff: \$350 - \$410 **Hosts:** Mark & Margarita Owen
1 superking; 1 king/twin both ensuite

Welcome to Villa Margarita, luxury accommodation situated twenty five minutes north of Wellington City, New Zealand's capital city. Come and experience the exotic flavour of the Villa, where comfort and pleasure await you. Corporate hosting & boutique weddings are a speciality. You will enjoy the peace and beauty of its natural, rural surroundings as you look to stunning views of the Pauatahanui Inlet, Mana Island and the South Island beyond.

234D Flightys Rd., Pauatahanui, Wellington.

Tel: +64-4-234 8870 Email: info@villamargarita.co.nz www.villamargarita.co.nz

Make your reservations online with HCI member properties.

Go to www.heritageinns.co.nz/reservations

Choose your Region. Check rooms availability...
Book & receive confirmation of your reservations
with total confidence.

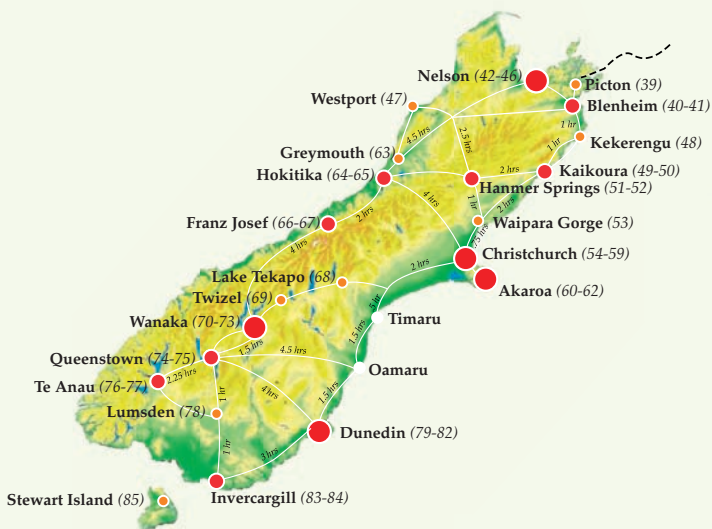
CHOOSE YOUR ROUTE

Select Heritage & Character Inns along your route.
The New Zealand map shows where you can find our inns.

The white lines connecting the towns show an estimated travelling time by car, allowing for regular stops.

For North Island map see page 6

SOUTH ISLAND



- One inn in this town / area
- Two inns in this town / area
- Three or more inns in this town / area
- (69) Inn number in this brochure
- 1.5 hr Estimated travel time between towns



39 McCormick House Luxury Accommodation – Picton Qualmark® 5 Star



Tariff: \$330 - \$450 **Hosts:** Jeanne & Carl Beaumont
1 superking/twin, 1 king, 1 queen, all with ensuite

Kiwi hosts Jeanne & Carl, welcome you to McCormick House, luxury accommodation, historic charm & large, private, established native garden. 3 large sumptuous ensuite bedrooms, queen, king, superking or twin beds, claw foot bath or double spa bath. Inclusive lavish gourmet breakfasts & pre-dinner drinks. Walk to Picton shopping, cafés, restaurants, galleries, kayaking, dolphin watching & bush walks. Central to Marlborough wineries. Proudly graded Qualmark Enviro-Gold.

21 Leicester St, Picton.

Tel: +64-3-573 5253 Email: enquiries@mccormickhouse.co.nz www.mccormickhouse.co.nz

40 The Peppertree – Blenheim Qualmark® 5 Star



Tariff: \$450 - \$570

Hosts: Heidi & Werner Pluss

2 king/twin, 2 king, 1 queen, all with ensuite

The timeless feel of this beautiful Edwardian villa (built in 1901) flows through into each of the guest suites where the ambience of an open fire prevails. Encased by 10 acres of lush farmland, cottage gardens, swimming pool, workout facility, on-site boutique vineyard with The Peppertree's own Chardonnay and olive grove. Easy 5 minute access from the town or 15 minutes from the Blenheim airport by car.

3284 State Highway One, Blenheim.

Tel: +64-3-520 9200 Email: info@thepeppertree.co.nz www.thepeppertree.co.nz

41 Old Saint Mary's Convent – Blenheim Qualmark® 5 Star



Tariff: \$550 - \$800

Hosts: Layonie Seque & Keith Denham

Five suites all with ensuite bathrooms

In the heart of the Marlborough wine growing area lies Old Saint Mary's Convent -- a haven for the discerning traveller, where luxury boutique accommodation and an intimate retreat may be found. Old Saint Mary's Convent is situated on an estate of 60 acres of vineyard and parkland and is surrounded on all sides by the vineyards and olive groves Marlborough is famous for.

Old St. Mary's Convent, 776 Rapaura Road, RD3, Blenheim.

Tel: +64-3-570 5700 Email: retreat@convent.co.nz www.convent.co.nz

42 Muritai Manor – Nelson Qualmark® 4 Star+



Tariff: \$250 - \$325 **Hosts:** Alex & Julia Hunter
2 superking/twin (1 with sofa bed) 1 king 2 queen

Muritai Manor is an Edwardian colonial home (1903), which has been tastefully restored. The five individually furnished bedrooms (all with en-suite), guest lounge & dining room enjoy views across the Tasman Bay or over our outdoor heated swimming pool, spa-pool & picturesque gardens. The Garden Room has a small kitchen area. Nelson is a popular arts & crafts area, with boutique vineyards & three National Parks all within a 90 minute drive.

48 Wakapuaka Rd, R.D.1, Wakapuaka, Nelson.

Tel: +64-3-545 1189 Freephone: 0800 260 662 Email: stay@muritaimanor.co.nz www.muritaimanor.co.nz

43 Shelbourne Villa – Nelson City Qualmark® 5 Star



Tariff: \$265 - \$385

Hosts: Val & Wayne Ballantyne

1 Super King & 3 King rooms all with ensuites

Shelbourne Villa offers a high standard of boutique accommodation for those seeking a central base while visiting the Nelson region. Location is quiet & close to Nelson Cathedral - less than 5 minutes walk to city centre, cafes, restaurants & galleries. Setting is an English style garden. Guest rooms are large, featuring a high level of decorating detail & works by local artists plus central heating/air-conditioning.

21 Shelbourne Street, Nelson.

Tel: +64-3-545 9059 Email: beds@shelbournevilla.co.nz www.shelbournevilla.co.nz

44 California House Inn – Nelson City

Qualmark® 5 Star



Tariff: \$335 **Hosts:** Janice & Ray Evans
1 Superking/twin 3 king suites all ensuite

Welcome to California House Inn where you can experience exceptional comfort, hosting, food & Enviro-Gold care. All these in a unique Listed Building (1893 significant History/Architecture). Quiet residential location 5 minutes walk to the heart of the city & a short drive to the region - the perfect central base! Spacious guest rooms feature many original details, fine antiques, extensive local art collection, heating/air con & Wifi.

29 Collingwood Street, The Wood, Nelson
Tel: +64-3-548 4173 Email: info@californiahouse.co.nz www.californiahouse.co.nz

45 Bronte Country Estate – Nelson

Qualmark® 5 Star



Tariff: \$520 - \$1,000 **Host:** Daniel Fraser
5 separate shoreline suites and villas

Bronte Country Estate is exclusive luxury accommodation in a tranquil natural setting. Nestled on the edge of the Waimea Estuary on Nelson's historic Bronte Peninsula, Bronte is surrounded by its extensive mature gardens, family-run vineyard and apple orchards. As Nelson's premier 5-star waterfront property, Bronte Country Estate is New Zealand owned and operated, with five purpose-built suites and villas set apart from the homestead.

Bronte Rd East, off Coastal Highway 60, near Mapua, Nelson.
Tel: +64-3-540 2422 Email: stay@brontecountryestate.co.nz www.brontecountryestate.co.nz

46 Wairepo House – Nelson

Qualmark® 5 Star



Tariff: \$420 - \$595 **Hosts:** Joyanne & Richard Easton
3 suites ensuite, 1 suite 2 bedrooms, all superking/twin
Exclusive country homestead set in a fifth generation apple and pear orchard, 2 acres paeonies, extensive woodland garden, overlooking Tasman Bay. Offering luxury and the utmost in comfort, each suite is carefully designed to fulfil guests individual expectations. Heated swimming pool, grass tennis court. Close to Abel Tasman national park, arts, crafts, vineyards. 2hrs Picton ferry. Flexi-time gourmet breakfast. Pizza oven and BBQ.

Weka Rd, Mariri, Tasman, Nelson.
Tel: +64-3-526 6865 Email: joyanne@wairepohouse.co.nz www.wairepohouse.co.nz

47 Rough & Tumble Bush Lodge – *Seddonville, Northern West Coast* Qualmark® 4 Star+



Tariff: \$300 - \$450
Hosts: Susan Cook & Marion (Weasel) Boatwright
5 Kings/twins up to quad occupancy, with ensuite

From the front deck you can almost cast a fishing line into the mighty Mokihinui River, while the jagged edge of Mt Glasgow silhouettes an untouched sky. Welcome to the native wilderness of the northern West Coast. Our lodge epitomises rustic elegance, with massive red beech dining tables and a handcrafted stone fireplace. Five beautifully appointed guest rooms feature sweeping views. Tariff includes all meals during your stay.

Mussel Point, RD 1 Nikau, Westport 7891. Tel: +64-3-782 1337 Freephone: 0800 DEEP IN
Email: godeep@roughandtumble.co.nz www.roughandtumble.co.nz

48 Kulnine Homestead & Cottage – *Marlborough / Kaikoura* Qualmark® 5 Star



Tariff: \$150 - \$375 **Hosts:** Helen & John Cundall
2 queen bedsteads, tiled ensuite, gardenviews.

The Homestead is elegantly furnished, with the highest standards and comforts. The setting, idyllic. Nestled beneath the majestic mountains to the shores of the Pacific. Close to whales and vineyards. Guests will be indulged with local seafoods and wines. Our fully selfcontained two bedroom cottage, set in an olive grove with beach and river access. Guests welcome to use the homestead facilities, of swimming pool and lawn tennis court.

5 Kekerengu Valley Rd, Kekerengu, Marlborough.
Tel: +64-3-575 8911 Email: cundall@ake.quik.co.nz www.kulninehomestead.co.nz

49 Miharotia House – Kaikoura

Qualmark® 4 Star+



Tariff: \$390

Hosts: Trevor & Polly Ruawai

2 king rooms & 1 four poster queen bed all with en suites

Welcome to Miharotia where you'll enjoy superb hospitality in superior style. Located atop the Kaikoura peninsula - amidst extensive garden and only 3 kms from the town centre. Wake up to panoramic views of the township, mountains and Pacific ocean. Breakfast is served upstairs in the dining room or balcony.

274 Scarborough St, The Peninsula, Kaikoura.

Tel: +64-3-319 7497 Email: bestviewsmiharotia@xtra.co.nz www.miharotia.co.nz

50 Fyffe Country Lodge – Kaikoura

Qualmark® 4 Star+



Tariff: \$270 - \$600

Hosts: Chris Rye & Colin Ashworth

King beds all with ensuite bathrooms

Fyffe Country Lodge is a stunning Kaikoura Landmark lodge accommodation, with a licensed NZ award-winning restaurant. The facilities at this Kaikoura luxury lodge accommodation include studios and suites with mountain and farmland views, a licensed award-winning restaurant with a cosy bar. The buildings are set on one and a half acres of manicured gardens with lush green lawns.

458 State Highway One, Kaikoura.

Tel: +64-3-319 6869 Email: fyffe@xtra.co.nz www.fyffecountrylodge.com

51 Cheltenham House – Hanmer Springs

Qualmark® 4 Star+



Tariff: \$220 - \$260

Hosts: Len & Maree Earl

6 suites, 5 en suites, 1 private bathroom

Enjoy warm hospitality in this popular alpine, thermal resort. Cheltenham House has been graciously restored with the guest's comfort paramount. Gourmet breakfast served in your own spacious, sunny suite. Complimentary wine in the Billiard room. Extensive garden with outdoor spa. 200 metres to the award winning Thermal Pools, restaurants & forest walks. Centrally heated throughout. Free wireless internet.

13 Cheltenham St., Hanmer Springs, North Canterbury.

Tel: +64-3-315 7545 Email: enquiries@cheltenham.co.nz www.cheltenham.co.nz

52 Rippinvale Retreat – Hanmer Springs

Qualmark® 5 Star



Tariff: \$295 - \$355 **Hosts:** John & Helen Beattie

2 queen suites with en suites

Built of adobe mud block, Rippinvale Retreat promises a very special New Zealand experience. Guests enjoy fine boutique accommodation in a private apartment style suite, sumptuous gourmet breakfast, alpine vistas, sweeping lawns, outdoor alpine jacuzzi, lawn tennis court, petanque, therapeutic massage, hunting, fishing and 4WD treks. Peace and privacy in a relaxed environment. Proudly graded Qualmark Enviro-Gold for responsible tourism.

68 Rippinvale Rd, Hanmer Springs. Tel: +64-3-315 7139 Freephone: 0800 373 098

Email: helen@hanmersprings.net.nz www.hanmersprings.net.nz

Make your reservations online with HCI member properties.

Go to www.heritageinns.co.nz/reservations

Choose your Region. Check rooms availability...
Book & receive confirmation of your reservations
with total confidence.

53 Claremont Country Estate – *Waipara Gorge, Amberley, Near Christchurch* **Qualmark® 5 Star**



Tariff: \$506 - \$1,024 **Hosts:** Richard & Rosie Goord
2 king suites, 1 luxury suite, 2 villas

A luxury country retreat just 45 minutes from Christchurch airport offering elegant accommodation in an historic limestone homestead (1866). Located beside the scenic Waipara Gorge on a 2,400 acre estate with private nature reserve and a working livestock farm within the foothills of the Southern Alps and close to Waipara vineyards. Fascinating pre-historic, geological features. On site walking trails and optional self-drive 4WD tour.

828 Ram Paddock Road, Waipara Gorge, RD2 Amberley, North Canterbury
Tel: +64-3-314 7559 Email: relax@claremont-estate.com www.claremont-estate.com

54 The Worcester – *Christchurch* **Qualmark® 5 Star**



Tariff: \$480
Hosts: Maree & Tony Taylor
2 superking suites with ensuite bathrooms

A beautifully preserved heritage house furnished in classic Victorian style, complete with a superb collection of art and antiques. Uniquely situated in Worcester Boulevard, across the road from the Arts centre, Botanic gardens, museum and five minutes walk to Cathedral Square. Personalised tours & wine trails are a speciality.

15 Worcester Boulevard, Christchurch.
Tel: +64-3-365 0936 Email: info@worcester.co.nz www.worcester.co.nz

55 The Weston House – *Christchurch* **Qualmark® 5 Star**



Tariff: \$395 - \$450 **Hosts:** Stephanie & Len May
2 suites with ensuites

5 star luxury in a Georgian mansion is a rare treat in Australasia and an experience not to be missed. Endorsed by top travel guides & judged to be 'among the best in NZ' - Weston House offers fine food and wine, relaxed luxury, vibrant conversation and truly personal service - all wrapped in history, grace and charm. Located opposite Hagley Park, less than 10 mins level walk from inner city attractions. Proudly graded Qualmark Enviro-Silver.

62 Park Terrace, Central City, Christchurch 8013.
Tel: +64-3-366 0234 Email: enquiries@westonhouse.co.nz www.westonhouse.co.nz

56 Hadleigh – *Christchurch* **Qualmark® 5 Star**



Tariff: \$308 - \$425 **Hosts:** Jon & Shirley Warring
1king/twin, 1queen, 1queen & sgle, 1sc king/twin + queen
Hadleigh, a late 19th Century English architectural gem is an inner city Historic Listed property. Voted a top lodge in 2008 by NZ Travel clients for its fabulous restoration, ambience, superb luxury, and generous hospitality. It was further recognised through a Supreme Heritage award, Qualmark 5 Star and Enviro-Silver status. The large garden is a quiet retreat close to the city centre. We invite you to share our special place, a warm welcome is assured.

6 Eversleigh St, Christchurch 8014.
Tel: +64-3-355 7174 Email: enquiries@hadleigh.co.nz www.hadleigh.co.nz

57 Elm Tree House – *Christchurch* **Qualmark® 5 Star**



Tariff: \$295 - \$395
Hosts: Karen & Allan Scott
1 superking, 3 king/twin, 2 queen all with ensuites

Enjoy this carefully restored Historic Places Trust listed home, situated in the inner city suburb of Merivale, 15 minutes from airport and rail station. Six well appointed guest rooms with private ensuite bathrooms, large guest lounge, or relax in our secluded rose garden under the shade 'sail'. Excellent restaurants and shopping just 4 minutes walk away.

236 Papanui Rd, Merivale, Christchurch.
Tel: +64-3-355 9731 Email: stay@elmtreehouse.co.nz www.elmtreehouse.co.nz

58 Clearview Lodge – Christchurch

Qualmark® 5 Star



Tariff: \$325 - \$375 **Hosts:** Robin & Sue Clements
3 superking/twin ensuite rooms, 1 disabled access

Relax just 10mins from Christchurch Airport and 15mins to the central city. Share a glass of our Pinot Noir, wander our 10 acres of vines, orchards and olive grove, explore the peaceful privacy of our gardens. Our 3 spacious ensuite rooms open to garden and vineyards. Sue and Robin will share local knowledge of Christchurch and their hospitality, ensuring your stay at their luxury Bed and Breakfast is memorable. Virtual tour www.clearviewlodge.com

8 Clearwater Avenue, Harewood, Christchurch.

Tel: +64-3-359 5797 Email: relax@clearviewlodge.com www.clearviewlodge.com

59 Ballymoney Farmstay and Garden – *Tai Tapu, Christchurch* Qualmark® 4 Star+



Tariff: \$220 - \$250 **Host:** Merrilies Rebbeck
King/twin & Queen+Single both ensuite

Ballymoney is a century old restored farmhouse just outside Christchurch. Set in two-acre rambling garden on a quiet country road, the house features native timber open fires and the rooms are individually decorated with antique furniture and original artwork. Relax and enjoy Kiwi/Irish hospitality, with seasonal cuisine prepared using our own homegrown meat, vegetables, fruit and nuts. There are many animals including rare breeds.

Wardstay Road, RD2, Christchurch.

Tel: +64-3-329 6706 Email: info@ballymoney.co.nz www.ballymoney.co.nz

60 Maison de la Mer - a petite lodge – Akaroa

Qualmark® 5 Star



Tariff: \$400 - \$450

Hosts: Carol & Bruce Hyland
2 King, 1 Queen suites with ensembles

Wide sea views captivate you from every room in this gracious, historic, and elegant waterfront home, in the centre of Akaroa village, steps from restaurants and activities. Sumptuous, intimate and comfortable - luxurious details abound and memorable gourmet breakfasts are the hallmark of your stay. Voted by guests in 2008 as the Trip Advisor winner- Best Hidden Gem in the South Pacific.

1 Rue Benoit, Akaroa.

Tel: +64-3-304 8907 Email: maisondelamer@extra.co.nz www.maisondelamer.co.nz

61 Mill Cottage – Akaroa

Qualmark® 5 Star



Tariff: \$295 - \$345

Hosts: Rosie Smith & Alistair Cocks
3 Bedrooms; 1 queen, 1 twin & 1 single

Our Cottage is set in a wonderful private two acre garden beside the Grehan Stream and is a short walk from the picturesque township of Akaroa. Perfect for small families, couples or anyone wanting to escape for a few days in a secluded and idyllic country garden setting. Enjoy memorable hospitality in your own self contained retreat.

81 Rue Grehan, Akaroa 7520, Banks Peninsula.

Tel: +64-3-304 8007 Email: info@millcottage.co.nz www.millcottage.co.nz

62 Garthowen – Akaroa

Qualmark® 5 Star



Tariff: \$260 - \$295 **Hosts:** Sharon and Ian Moore
4 Superking ensuite, one with Claw foot bath

Garthowen on the Waterfront. Purpose built in 2006 in character style of 1880's with spectacular 180 deg views of French Bay, within sight of cafés, restaurants and boutique shops. Use of native timber and local original art creates an atmosphere of tranquillity and charm. Décor was designed with guests comfort in mind and together with a delicious gourmet breakfast served alfresco or in the dining room, a luxurious stay is assured.

7 Beach Road, Akaroa.

Tel: +64-3-304 7419 Email: info@garthowen.co.nz www.garthowen.co.nz

63 Rosewood – Greymouth**Qualmark® 4 Star**

Tariff: \$200 - \$250 **Hosts:** Rhonda & Stephan Palten
4 guest rooms, ensuite or private bathrooms

Rosewood is one of Greymouth's most admired homes. Now fully restored, this 1920's Gentleman's residence is just a short stroll to the town centre. Rhonda & Stephan offer warm and friendly hospitality in spacious modern surroundings letting you unwind from your journey and days activities. Enjoy home baking and delicious breakfasts with a European accent. Wireless Internet, full SKY on wide screen LCD TV and TransAlpine courtesy pickup available.

20 High St., Greymouth.

Tel: +64-3-768 4674 Freephone: 0800 185 748 Email: stay@rosewoodnz.co.nz www.rosewoodnz.co.nz

64 Awatuna Homestead – Hokitika - West Coast**Qualmark® 4 Star+**

Tariff: \$250 - \$360 **Hosts:** Pauline & Hemi Te Rakau
2 SuperKing/Twin; 2 Queen; 1 Twin; 3 ensuite; 1 Apt

Family home since 1874. Colonial style architecture, beautiful wood interiors. Double French bedroom doors open to wide verandas. 5 guest rooms with ensuites. Park-like gardens. Farm house kitchen, hearty breakfasts, evening dinners by prior arrangement. Close to river, seabeach, native bush and history. Maori cultural story telling in evening by the fireside. Vintage cars on site. Family pets complete the welcome. Please see website.

9 Stafford Road, Awatuna, RD 2, Hokitika, Westland 7882. Tel: +64-3-755 6834 Freephone: 0800 006 888

Email: rest@awatunahomestead.co.nz www.awatunahomestead.co.nz

65 Rimu Lodge – Hokitika**Qualmark® 5 Star**

Tariff: \$295 - \$365

Hosts: Helen & Peter Walls

1 superking/twin; 1 king; 2 queen all ensuite

Nestled on a ridge top, Rimu Lodge offers views out over the Hokitika River, farmland and to the mountains beyond. Four individually styled casually elegant ensuite rooms all taking maximum advantage of the extensive views. Each room features a comfortable seating area for relaxing. Guests are able to relax and enjoy the large deck. Ten minutes from Hokitika in the heart of trout fishing country and walking tracks. The perfect retreat.

33 Seddon Terrace Road, Rimu, Hokitika, Westland.

Tel: +64-3-755 5255 Email: rimulodge@xtra.co.nz www.rimulodge.co.nz

66 Holly Homestead – Franz Josef Glacier**Qualmark® 4 Star+**

Tariff: \$200 - \$400

Hosts: Bernie & Gerard Oudemans

2 Queen, 2 SuperKing/Twin, 1 King suite, all ensuite

This colonial homestead is one of Franz Josef's finest old timber homes. Originally a farmhouse built circa 1926, now renovated and extended carrying on the warm native rimu timber theme. NZ born hosts proudly promote the natural beauty of "glacier country." Spectacular alpine view from large breakfast table, clouds permitting!

2900 Franz Josef Highway, Franz Josef Glacier, South Westland.

Tel: +64-3-752 0299 Email: stay@hollyhomestead.co.nz www.hollyhomestead.co.nz

Make your reservations online with HCI member properties.

Go to www.heritageinns.co.nz/reservations

**Choose your Region. Check rooms availability...
Book & receive confirmation of your reservations
with total confidence.**

67 Franz Josef Glacier Country Retreat – Franz Josef Glacier Qualmark® 4 Star+



Tariff: \$395 - \$595 **Hosts:** Marie & Glenn Coburn Queen, SuperKing/Twin, Four-Poster Queen

Set in 200 acres of peaceful farmland where our pioneer family has resided for over 100 years. Our new building's design was inspired by a historical West Coast homestead/hotel. This unique accommodation offers traditional hospitality in luxurious surroundings, looking towards picturesque Lake Mapourika & surrounded by mountains. All 12 luxury rooms have views and are centrally heated. Large Guest lounge with open fire.

State Highway 6, Lake Mapourika. PO Box 11, Franz Josef Glacier. Tel: +64-3-752 0012
Freephone: 0800 FRANZ JOSEF Email: stay@glacier-retreat.co.nz www.glacier-retreat.co.nz

68 Lake Tekapo Grandview – Lake Tekapo Qualmark® 4 Star+



Tariff: \$240 - \$310

Hosts: Rosemary & Leon O'Sullivan
2 superking/twin, 2 king rooms all with ensuites

Built on an elevated site overlooking the beautiful Lake Tekapo, it offers spectacular unobstructed lake and alpine views. Relax in one of the four luxurious kingsize rooms and enjoy the comfort and hospitality of this recently built bed and breakfast. Join us in the evening for a glass of wine and start your day with breakfast selected from our menu.

32 Hamilton Drive, Lake Tekapo.
Tel: +64-3-680 6910 Email: info@laketekapograndview.co.nz www.laketekapograndview.co.nz

69 Matuka Lodge – Mt Cook/Twizel Qualmark® 5 Star



Tariff: \$465 - \$535

Hosts: Rosalie & Russell Smith
2 superking/twin, 2 king, all with ensuites

Discover the magic of Matuka Lodge. Luxury. Stunning mountain views. Tranquility. Located 3km from Twizel, gateway to Mt Cook National Park. Halfway between Christchurch and Queenstown. Enjoy comfort and style in a casually elegant atmosphere. Whether seeking relaxation, outstanding trout fishing, or adventure, an exceptional experience awaits you at Matuka Lodge.

Old Station Road, 395 Glen Lyon Road, Twizel
Tel: +64-3-435 0144 Email: info@matukalodge.co.nz www.matukalodge.co.nz

70 Minaret Lodge – Wanaka Qualmark® 5 Star



Tariff: \$395 **Hosts:** Fran & Gary Tate

4 superking/twins, 1 two room suite, all ensuite

Wanaka's luxury boutique retreat, located in a 2 acre park like setting, just 10 mins walk to town centre. The lodge (built 1950's) features a mud brick construction with plastered finish. The separate guest chalets, newly built using natural timbers & non toxic materials. All have en suites & private balcony. Gourmet breakfast & aperitifs included. Winter Ski Packages available. Voted No.1 lodge in Wanaka by Trip Advisor.

34 Eely Point Rd, Wanaka.
Tel: +64-3-443 1856 Freephone: 0800 568 763 Email: relax@minaretlodge.co.nz www.minaretlodge.co.nz

71 Wanaka Stonehouse Lodge – Wanaka Qualmark® 4 Star+



Tariff: \$315 - \$395 **Hosts:** Jaime & Anna Kate Hutter
2 superking/twin, 2 queen, all with ensuites

This boutique lodge is a short walk to the lakefront, shops, restaurants & Rippon Vineyard. Built of local stone and wood, it has the warmth and character of an alpine skiing or fishing lodge. 4 guest rooms with ensuite. Luxurious lounge, open fireplace, and wireless internet throughout. After a day on the trails, there's a spa pool & sauna for your aches. Cooked breakfast included. 30 minutes to 4 ski fields. Hosts live in separate cottage.

21 Sargood Drive, Wanaka.
Tel: +64-3-443 1933 Email: stay@wanakastonehouse.co.nz www.wanakastonehouse.co.nz

72 Wanaka Springs Lodge – Wanaka

Qualmark® 4 Star+



Tariff: \$295 - \$355 **Hosts:** Lyn & Murray Finn
2 Superking, 5 Queen, 1 Twin, all with ensuite

Dramatic mountain and lake views captivate you while relaxing in the peaceful and secluded landscaped gardens where natural springs flow. Offering generous New Zealand hospitality, including complimentary aperitifs daily, a leisurely few minutes stroll takes you to Wanaka's lakefront town centre with numerous restaurants & bars. After a supremely comfortable and peaceful night, linger over our scrumptious full breakfast ready for the day ahead.

21 Warren Street, Wanaka.

Tel: +64-3-443 8421 Email: relax@wanakasprings.com www.wanakasprings.com

73 Lime Tree Lodge – Wanaka

Qualmark® 5 Star



Tariff: \$395 - \$695

Hosts: Rebecca Butts & Sally Carwardine
4 rooms & 2 superior suites, all with ensuites

Set on a 10-acre estate, just outside Lake Wanaka, Lime Tree Lodge offers stunning 360 degree, uninterrupted mountain views, luxuriously appointed accommodation and an introduction to the fine wine and produce of the region. French doors open out to landscaped gardens, providing easy access to the swimming pool, spa pool, croquet lawn, five-hole pitch and putt golf course and on-site helipad. Gourmet breakfast, home-baking & aperitifs included.

672 Ballantyne Rd, R D 2 Wanaka.

Tel: +64-3-443 7305 Email: revive@limetree lodge.co.nz www.limetree lodge.co.nz

74 Pencarrow – Queenstown

Qualmark® 5 Star



Tariff: \$595

Hosts: Bill & Kari Moers
4 king suites, all with ensuites and lake views

Suites individually designed with private sitting rooms and the finest amenities available. Ensuites provide spa bath, separate shower, double vanity, heated towel rail and under tile heating. Guest areas include snooker room, new river lounge and bar, dining room and tourist/concierge room. 4 acres of landscaped gardens, decks and patios, everything overlooking the lake and mountains.

678 Frankton Road, Queenstown.

Tel: +64-3-442 8938 Email: info@pencarrow.net www.pencarrow.net

75 A Boutique Hotel Queenstown House – Queenstown Central

Qualmark® 4 Star



Tariff: \$295 - \$695

Host: Louise Kiely
Guestrooms & Villa Suites

The renowned Boutique Hotel overlooking Queenstown Bay with majestic views - 200 metres to the towncentre. 15 charming rooms including 5 luxurious Villa Suites & Studio rooms. Delux breakfast menu and pre-dinner hosted get together included. Enjoy the lakeview dining room, fireside sitting room or relax on one of the outdoor decks. Established in 1982, this unique Inn offers New Zealand Hospitality at its best.

69 Hallenstein St, Queenstown.

Tel: +64-3-442 9043 Email: queenstown.house@xtra.co.nz www.queenstownhouse.co.nz

76 Blue Ridge Boutique Bed & Breakfast – Te Anau

Qualmark® 4 Star+



Tariff: \$225 - \$275 **Hosts:** Julia & Phillip Robertson
3 king/twin & 1 queen - all ensuite bathrooms

Enjoy comfort and warm hospitality at Blue Ridge. Our 3 new purpose built rooms (2005) have tasteful modern decor, comfortable king beds, heated tiled ensuites, great showers, and all home comforts, plus we have a 4th suite of 2 rooms + ensuite within our home. All rooms have cable TV, DVD player, broadband + T&C available at all times. A delicious full breakfast is served in our dining room. Enjoy a glass of wine on the deck or soak in our spa.

15 Melland Place, Te Anau.

Tel: +64-3-249 7740 Email: info@blueridge.net.nz www.blueridge.net.nz

77 Dunluce Bed & Breakfast – Te Anau

Qualmark® 4 Star+



Tariff: \$230 - \$295 **Hosts:** Wendy & Roger McQuillan
king rooms with view large ensuites 1 with spabath

Dunluce is Te Anau's newest boutique B&B with panoramic lake and mountain views from every room. Our private guest wing has 4 ensuite rooms with king beds, and large modern ensuites. The deluxe room has a double soaking/spa bath. A delicious homemade cooked and continental breakfast is served in the guest dining room. We offer complimentary internet, laundry, storage, baking, beverages and warm kiwi hospitality.

128 Aparima Drive, Te Anau, Fiordland.

Tel: +64-3-249 7715 Email: info@dunluce-fiordland.co.nz www.dunluce-fiordland.co.nz

78 Five Rivers Retreat – Northern Southland

Qualmark® 4 Star



Tariff: \$245 **Hosts:** Paula & Roger Thompson
Two king rooms both with ensuites

Enjoy great accommodation and good southern hospitality on a Northern Southland Working Farm. Centrally located between Queenstown and Te Anau we are within close proximity to the well known great fishing rivers of the area. We have two rooms, both have king size beds and their own large ensuites. Whether it is for the fishing, the country side quietness or perhaps a base you are after, do stop and visit - a warm welcome guaranteed.

708 Lumsden - Five Rivers Highway, No 3 R D, Lumsden, Southland

Tel: +64-3-248 7668 Email: info@fiveriversretreat.co.nz www.fiveriversretreat.co.nz

79 Fletcher Lodge – Dunedin

Qualmark® 5 Star



Tariff: \$295 - \$650 **Hosts:** Keith & Ewa Rozecki-Pollard
6 Ensuite rooms, Queen, King and Super King sizes

Just minutes walk from the city centre and set in secluded landscaped gardens. This Historic Places Trust property combines true elegance with the finest of modern facilities like broadband WIFI and in house movies. Guest rooms are richly furnished with antique French and period furniture and feature superbly appointed ensuite bathrooms. Our deluxe hot spa in the sunken garden and our large sunny decks add true relaxation to your stay with us.

276 High St, Dunedin.

Tel: +64-3-477 5552 Freephone: 0800 THE LODGE Email: admin@fletcherlodge.co.nz www.fletcherlodge.co.nz

80 Lisburn House – Dunedin

Qualmark® 4 Star+



Tariff: \$195 - \$275

Hosts: Olivia & Alan Johnston

3 rooms: 1 ensuite, 2 pvt bathrooms

Lisburn House (1865) is one of Dunedin's finest remaining examples of 19th Century architecture. Experience that unique blend of warm and friendly Kiwi and Irish hospitality. Candlelight dining by an open fire in our boutique à la carte restaurant which regularly features seafood and wild venison on the menu. Bookings essential. Central location.

15 Lisburn Avenue, Caversham, Dunedin.

Tel: +64-3-455 8888 Email: stay@lisburnhouse.co.nz www.lisburnhouse.co.nz

Make your reservations online with HCl member properties.

Go to www.heritageinns.co.nz/reservations

Choose your Region. Check rooms availability...
Book & receive confirmation of your reservations
with total confidence.

81 Nisbet Cottage/Nature Guides Otago – Dunedin **Qualmark® 4 Star+**



Tariff: \$500 - \$595 **Hosts:** Hildegard & Ralf Lubcke
1 king/twin suite, 1 super king suite

Nisbet Cottage offers luxury accommodation in two spacious suites with broadband internet access. Owned and operated by Nature Guides Otago, the lodge caters exclusively for guests who participate in the company's expert-guided nature tours for max. 6 people. Two nights B&B, Sunrise Penguin Walk, Peninsula Excursion & Albatross Encounter with eco activities are offered as package and included in the tariff (dbl, pp). Extra nights B&B available.

6a Elliffe Place, Shiel Hill, Dunedin 9013.

Tel: +64-3-454 5169 Email: info@natureguidesotago.co.nz www.natureguidesotago.co.nz

82 Highland Peaks – Dunedin **Qualmark® 4 Star+**



Tariff: \$285 - \$450

Hosts: Dr Peter & Di Espie

2 super-king/twin ensuite/pvt, 1 king ensuite

Enjoy panoramic views and 21 acres of country seclusion right next to Dunedin. This Enviro-Gold rated luxury lodge features elegant modern suites with comfortable beds, double showers, spa baths, under-floor tile heating, WIFI internet, extensive sundecks and a private spa pool. Fine NZ hospitality, cuisine & wines. Peter, a university ecologist, guides personalised eco tours.

333 Chain Hills Rd, R.D.1, Dunedin.

Tel: +64-3-489 6936 Email: info@highlandpeaks.com www.highlandpeaks.com

83 Greenbush Bed & Breakfast Farmstay – *Catlins Southland* **Qualmark® 4 Star**



Tariff: \$200 - \$250 **Hosts:** Ann & Donald McKenzie
1 king, 1 queen, 1 king/twin all ensuite

Greenbush offers guests a tranquil environment of natural beauty. The magic of a two-acre garden paradise, an experience that makes a stay at Greenbush unforgettable. Steeped in family history, Greenbush (a 1000 acres sheep and cattle farm) is located 4 kms from Fortrose, in a part of New Zealand known for its natural rugged beauty. Stroll a wild beach, relax in the garden, enjoy golf by the sea at Fortrose, we have it all at Greenbush.

298 Fortrose-Otara Road No.5.R.D., Invercargill.

Tel: +64-3-246 9506 Email: info@greenbush.co.nz www.greenbush.co.nz

84 Safari Lodge – Invercargill **Qualmark® 4 Star+**



Tariff: \$230 - 260 **Hosts:** Ray & Trish Winter

Super King and Queen ensuite rooms with canopy bed

Indulge yourself in luxurious comforts and Edwardian charm, in one of Invercargill's finest stately homes built 1902. Safari Lodge is within 300 metres of Invercargill's botanic garden. It is within 10 minutes walk to Information Centre and 15 minutes walk to city centre. Facilities include. Private Spa Room, Formal Dining with in house cafe, Theatre Room, Billiard Room with full size competition table and Sun Room. Evening Meals available.

51 Herbert Street, Invercargill.

Tel: +64-3-214 6329 Freephone: 0800 885 557 Email: luxury@safarilodge.co.nz www.safarilodge.co.nz

85 Sails Ashore – Stewart Island **Qualmark® 4 Star+**



Tariff: \$420 - \$730 **Hosts:** Iris & Peter Tait
ensuite, king, king/single

Sails Ashore perfectly complements the Stewart Island experience. Finished in native Rimu timbers, overlooking Halfmoon Bay with Foveaux Straits beyond, guests enjoy the tranquillity and beauty of Rakiura, Land of the Glowing Skies. Packaged exploration of Ulva Island explores both the natural and human story of the Island we have lived and worked on for 40 years. It is our privilege to share our home and our love of the Island with our guests.

11 View St, Stewart Island.

Tel: +64-3-219 1151 Freephone: 0800 783 9278 Email: tait@sailsashore.co.nz www.sailsashore.co.nz

PORTFOLIO



COLLECTION

Benchmark of the Best

The Portfolio Collection

The Portfolio Collection is a benchmarking organisation in South Africa and offers over 700 top quality establishments, each personally visited and independently assessed annually, if not more often. Entry levels for acceptance into The Portfolio Collection are very high, with good service as a prerequisite and, in essence, represent the best in South Africa. Establishments are rated against the current prevailing standards and assessed accordingly and we have a criteria list which is revised annually.

The Portfolio Collection publishes three different Collections each year, and prints and distributes 175,000 copies of each locally and internationally:

The Bed and Breakfast Collection

Quality Bed and Breakfast in Private Homes, Self-Contained Cottages and on Working Farms.

The Retreats Collection

City Guest Houses, Country Retreats, Small Game Lodges, Unique Self-Contained Hideaways, Villas and Apartments.

The Country Places Collection

Fine Country Houses, Boutique Hotels, Private Game Reserves, Villas & Apartments, Health Spas, Wedding, Honeymoon and Conference Venues.

The Portfolio Collection also has a dynamic interactive website, which offers online reservations. The website covers all the Guides in the Collection and is updated daily. Please visit www.portfoliocollection.com

Treat yourself to the perfect European holiday

PERFECT LOCATIONS & PERFECT PLACES TO STAY



Why not treat yourself and discover what is so unique about Wolsey Lodges very special brand of hospitality.

Beautiful homes, the freshest food and the warmest of welcomes make Wolsey Lodges a perfect place to stay for your holiday. With sumptuously furnished bedrooms to relax in and with menus typically drawing on the locality for inspiration, with home-grown produce offered alongside locally produced and often organic food as well, your day will always begin with the heartiest of breakfasts.

We have the houses, the hosts and the hospitality that are worth leaving home for. Why not visit our website for all the inspiration you need to find your perfect holiday?

WOLSEY  LODGES

You can order a copy of the
Wolsey Lodges' brochure by visiting our website.

Wolsey Lodges Ltd, 9 Market Place, Hadleigh, Ipswich, Suffolk IP7 5DL, UK

www.wolseylodges.com

Luxurious Accommodation
Generous Hospitality
Engaging Hosts



Browse and Book @
www.heritageinns.co.nz